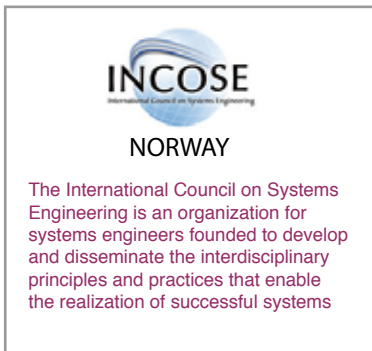


Sponsors:



**Kongsberg Industry:**

Combining technologies into advanced complex products for the global market



Kongsberg

Systems Engineering Event 2009 **4. - 5. JUNE**

## THURSDAY June 4

- 1600 Registration and a bite to eat**
- 1715 Welcome**  
Halvor Austenaa, Director of Systems Engineering, HIBU
- 1730 Opening Key Note: Human Factors in System Operations**  
Michael Pennotti, PhD, Stevens Institute of Technology
- 1800 10 Suggested Principles for Human Factors Systems Engineering**  
Tom Gilb
- 1830 Light Refreshments**
- 1900 Systems Engineering and Corporate Social Responsibility**  
Annik Magerholm Fet, PhD, Professor NTNU
- 2000 Jazz Concert, Morten Qvenild**  
followed by Barbecue Dinner and Networking

The papers are published on the HIBU KSEE website

Register by May 28. We will invoice you.  
Fee: 1800 NOK for the two day event, Barbecue included.  
Please register on-line at: [www.HIBU.NO/KSEERegistration](http://www.HIBU.NO/KSEERegistration)  
Call ASAP if you need hotel room.

### Other links

[www.hibu.no/KongsbergSystemsEngineeringEvent](http://www.hibu.no/KongsbergSystemsEngineeringEvent)  
[www.hibu.no/SystemsEngineeringMaster/](http://www.hibu.no/SystemsEngineeringMaster/)

## FRIDAY June 5

- 0900 Key Note Day 2: When 'Human Factors' become 'Social Factors': challenges for integrating heterogeneous enterprises**  
Samantha Brown, INCOSE President elect
- 0945 HIBU Student Paper, Masters Project in Systems Engineering**  
Master of Systems Engineering Stevens Institute of Technology
- 1010 Coffee Break**
- 1040 Use of knowledge maps in Systems Engineering**  
Alberto Sols, PhD, Director SABENTIA
- 1100 Multidisciplinary Cooperation: going down or up?**  
Maarten Bonnema, PhD, Professor University Twente
- 1200 Lunch**
- 1245 Understanding the Human Factor by making understandable visualizations**  
Gerrit Muller, PhD, SE Professor HIBU
- 1345 Panel Session: Human Factors in System Operations**  
Rolf Qvenild, Professor BUC, Panel host
- 1500 Summary and Closing**

Conference Chairman: Gunnar.Berge, SE Industry Professor  
Program Chairman: Cecilia Haskins, INCOSE NORWAY  
Contact [Gunnar.Berge@hibu.no](mailto:Gunnar.Berge@hibu.no)

...exchange ideas with your colleagues and our distinguished speakers,  
keep abreast of the state-of-the-art in systems engineering!